

1st work report
on the construction of one building holding 1 classroom only and toilets
for the public primary school of N’Gbeho
District of Godomey
municipality of Abomey-Calavi

At 10 a.m. we meet for the general assembly at the primary school of N'Gbeho with the PTA and the teachers of the school. After the usual greeting ritual, the contract is read out, translated and explained. Questions are being answered. Then those present vote positively for the contract. The site is inspected. The ground is saturated with water upon entering. This means that we have to take special measures to build a stable building. The chairperson of the PTA offers his house as storage place for the building materials, since it is directly opposite to the school and transport to the construction site is therefore easy. Cement is stored in the Principal's office. The workers can sleep in one of the classrooms.

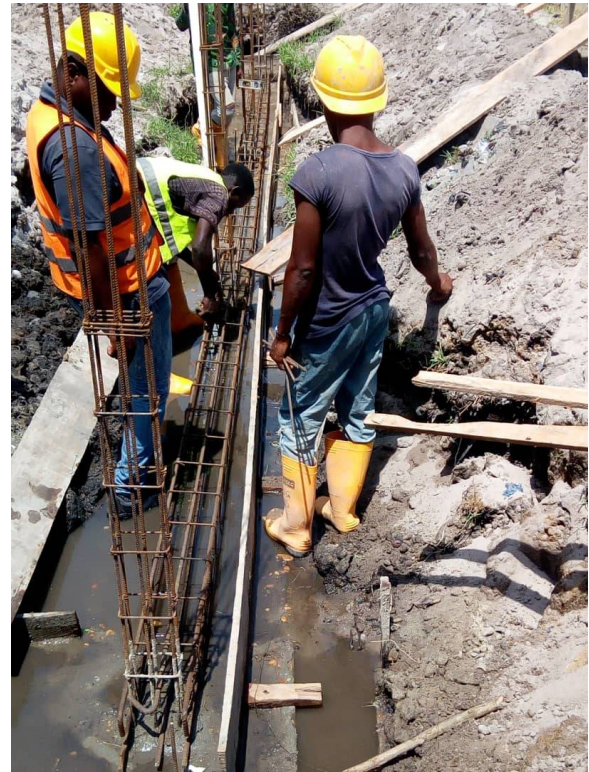
While the building materials are being delivered, we create the batter board.



The excavation work is very difficult because the excavated material is quickly washed back into the trenches. The water has to be pumped out several times a day.



Even the foundation base has to be boarded up so that it doesn't float away with the water.



To prevent the foundation from breaking when the subsoil moves with the water, we cast an additional iron anchor with a 14-gauge iron insert onto the foundation base. The foundation walls are now being erected on top of this.



To prevent the foundation from breaking when the subsoil moves with the water, we cast an additional iron anchor with a 14-gauge iron insert onto the foundation base. The foundation walls are now being erected on top of this.



The small iron anchor is placed and cast.



The pillars on the veranda are boarded and poured.



When the iron benders attached the reinforcement of the upper iron anchor to the front of the building, all the flood gates in the sky opened and a downpour hindered the work.



The upper iron anchor is cast in one piece. The walls are then increased by four rows of building blocks.



A fourth iron anchor is cast below the roof before the gables are erected on top. Finally, the ends of the pillars are boarded and poured.



While the walls are drying, the staircase is laid. This is also the time to fill the building with sand.



The roof can be tackled in mid-November. We buy ebony planks and have them cut to size. The cut wood arrives at the construction site and is processed immediately.



Finally, the roofing sheets are screwed on.



We send a heartfelt "Thank you" to all our partners and friends and wish everyone a prosperous year 2023.

