

Public Primary School of Odja-Odan

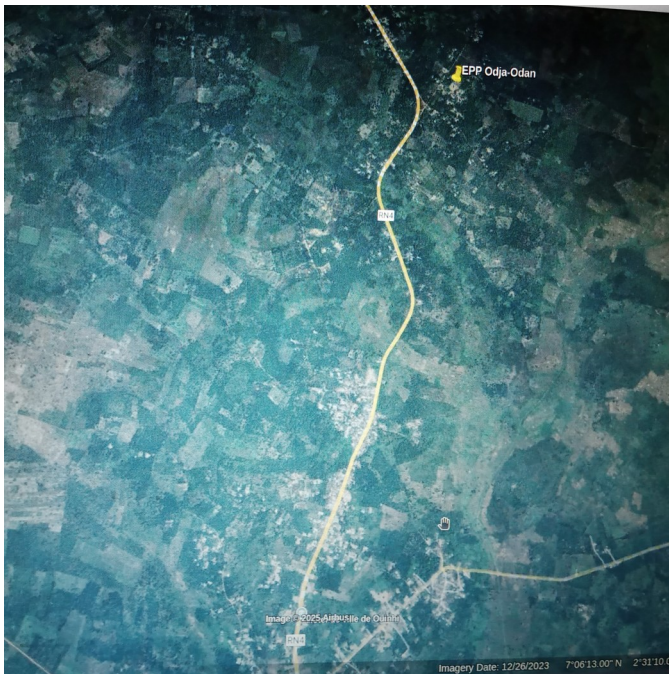
District of Ouinhi-Center

Municipality of Ouinhi

Republic of Benin

Directions:

From Cotonou, we head east to Porto Novo and from there via Sakete to Pobé. In Pobé, a road turns left at a T-junction toward Adja Ouèrè. In Adja Ouèrè, the main road turns right. We follow the road until we reach a T-junction at the entrance to Ouinhi, where we turn right toward Ouinhi. We pass the town hall and follow National Road 4 (RN4), which first curves slightly to the left, then to the right, and then to the left again. At this curve, we turn right onto a red dirt road. At the second intersection, we turn right and, after a short distance, we see the primary school of Odja-Odan on the left. The road is very long. It took us about three and a half hours.



The coordinates on Google Earth are:

Latitude: 7°7'47.01"N

Longitude: 2°31'13.57"E

Initial situation:

The Primary School of Odja-Odan was founded in 2011.

Today, there are three permanent classrooms for the six school classes with a total of 298 students, including 133 girls. In 2017, the government of Benin built the permanent building with three classrooms, an office and storage room, and two toilet blocks for this school. The remaining classes are housed in shelters. The students are not protected from the rain. Since they are often forced to stay at home during the rainy seasons (April to mid-July and mid-September to mid-November), they miss classes and struggle to achieve their grade goals.

Suggested solution:

1. Construction of one building holding three classrooms

Cost: 38.025,21 €

3. Personnel expenses: supervisor 260 € x 6 = 1.560 €, technicien 229 € x 6 = 1.374 €:
total 2.934 €

4. cost of controls: 3.000 Euro

The total cost of this project amounts to 43.959,21 €

25% of the total costs are 10.989,80 €



Overview of the school



The government of Benin built this building in 2017. It is very clean and well-maintained. Trees have been planted in the schoolyard.



Two school classes are accommodated in these shelters. A homemade handwashing station is located in front of the shelter.